

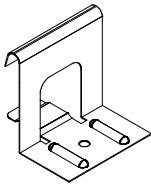
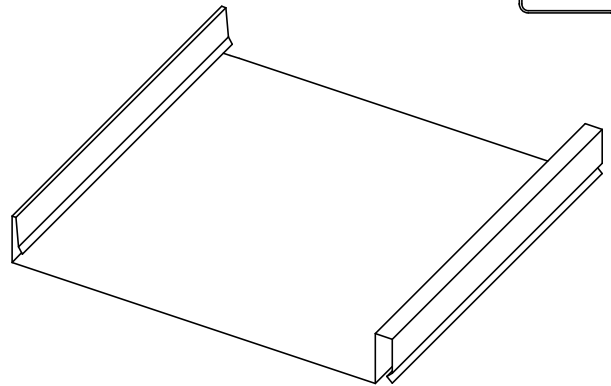
# 1 3/4" NU-TECH

· ROOF · WALL

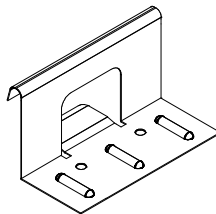


1 3/4" Nu-Tech is a concealed snap-on roof panel excellent for installation over solid substrates with vapour barrier (asphalt saturated felt or peel & stick) or over open purlins.

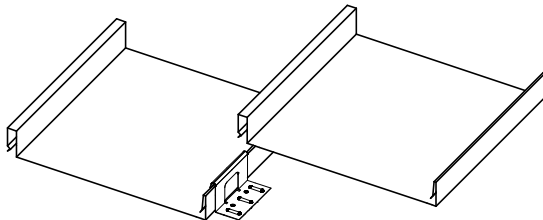
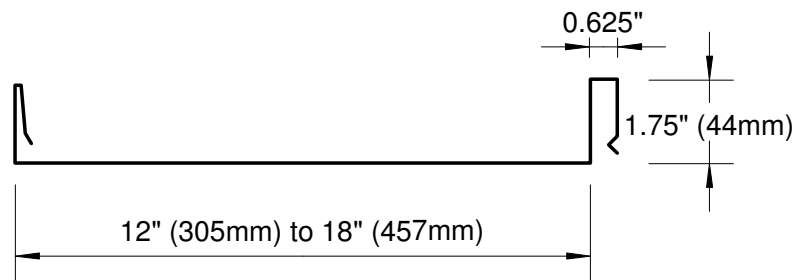
- ▶ Standard width of 12" (305mm) or 18" (457mm) or custom width from 12" (305mm) to 18" (457mm).
- ▶ Roll formed to custom length in 26ga, 24ga and 22ga.
- ▶ Available in Pre-painted Steel, Galvalume, Galvanized, Aluminum, Copper, and Rheinzink.
- ▶ Optional Double Stiffener or Striations for wide panels to reduce the appearance of oil canning.



Nu Tech 2" (51mm)  
Standard clip  
@ 4' (1219mm) OC



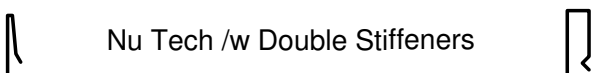
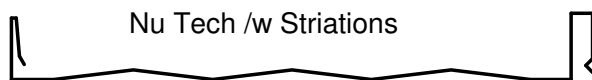
Nu Tech 3.5" (89mm)  
RCABC clip  
@ 2' (610mm) OC



Nu Tech Load Table (18" width)		Allowable Uniform Distributed Load (psf)				
		Span				
		3' 0"	3' 6"	4' 0"	4' 6"	5' 0"
24 Ga	SS f	99	73	55	43	35
	L / 240	99	73	55	43	35
	DS f	76	55	42	33	27
	L / 240	76	55	42	33	27
	TS f	95	70	53	42	33
	L / 240	95	70	53	42	33
22 Ga	SS f	127	93	71	55	45
	L / 240	127	93	71	55	45
	DS f	110	80	61	48	38
	L / 240	110	80	61	48	38
	TS f	137	100	77	60	48
	L / 240	137	100	77	60	48

Legend: f - Load limited by flexural bending stress  
L - Span (inches)  
L / xxx - Load limited by deflection  
SS - Single Span  
DS - Double Span  
TS - Triple Span

## Options:



**LMC Manufacturing Ltd**

6962 Buller Ave, Burnaby, BC V5J 4S3  
Tel: 604-430-3233 Fax: 604-430-2028

Website: [www.lammetal.ca](http://www.lammetal.ca)